



www.billbeall.com

## 1,840 SF Office / Warehouse- For Lease

617 N. Washington

Springfield, MO 65806



### HIGHLIGHTS

- 1,840 SF
  - Zoned Heavy Manufacturing
  - 12' Overhead Door
  - 10' Dock
- Lease Rate: \$7.00/SF ( \$1,074.00 /month) + NN
- Tenant to pay Taxes & Insurance: Estimated \$183/Month
- Landlord to be responsible for Common Area Maintenance
- 10' x 16' Office

FOR ADDITIONAL INFORMATION PLEASE CONTACT

Bill Beall Co., Inc.

2921 S. National Ave., Springfield, MO 65804

(417) 887-5535 email: [beall@billbeall.com](mailto:beall@billbeall.com)

**617 N. Washington**  
Springfield, MO 65806



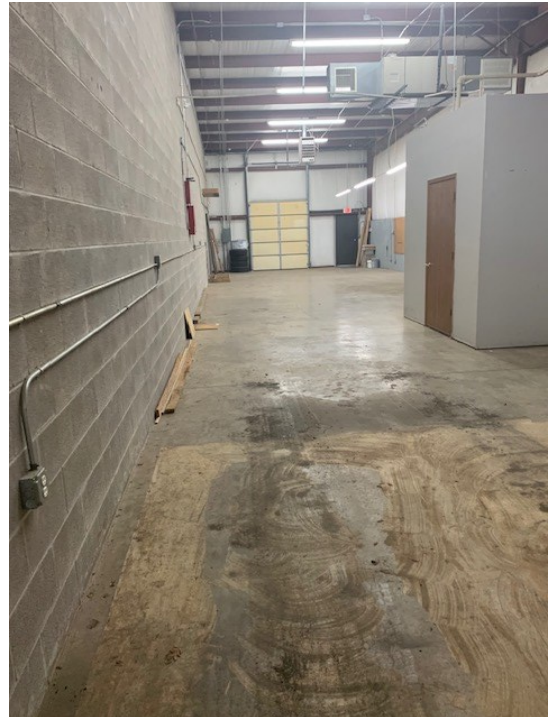
FOR ADDITIONAL INFORMATION PLEASE CONTACT

Bill Beall Co., Inc.

2921 S. National Ave., Springfield, MO 65804

(417) 887-5535 email: [beall@billbeall.com](mailto:beall@billbeall.com)

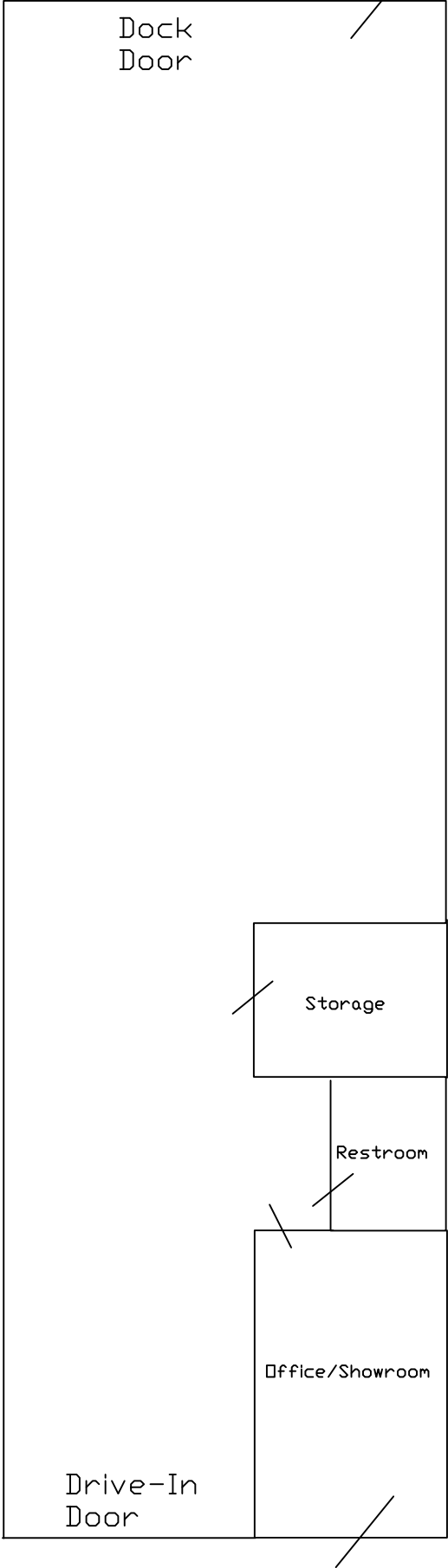
**617 N. Washington**  
Springfield, MO 65806



FOR ADDITIONAL INFORMATION PLEASE CONTACT

---

Bill Beall Co., Inc.  
2921 S. National Ave., Springfield, MO 65804  
(417) 887-5535 email: [beall@billbeall.com](mailto:beall@billbeall.com)

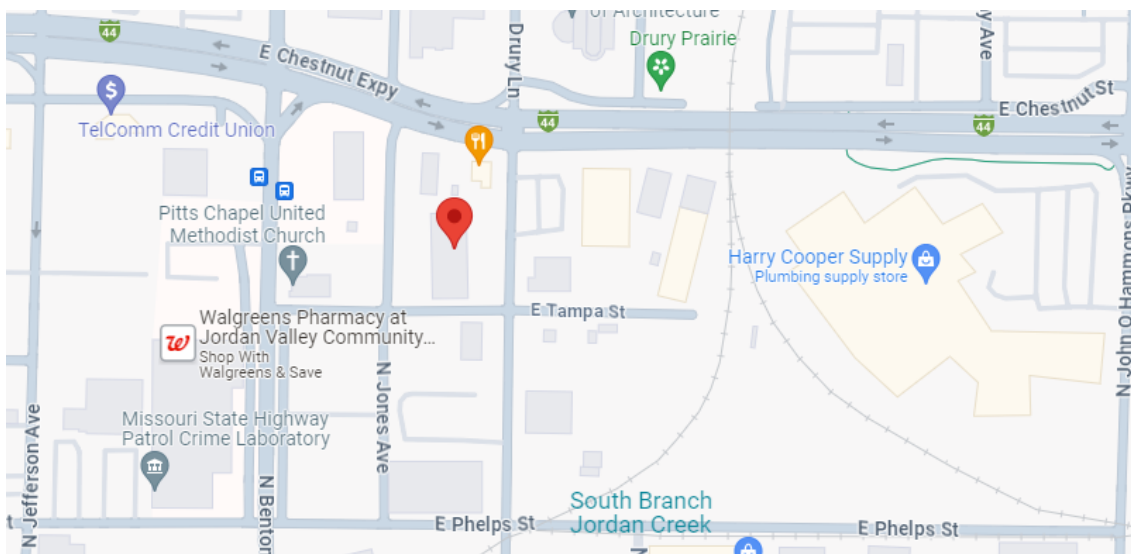


617 N. Washington



**617 N. Washington**

Springfield, MO 65806



FOR ADDITIONAL INFORMATION PLEASE CONTACT

Bill Beall Co., Inc.

2921 S. National Ave., Springfield, MO 65804

(417) 887-5535 Email: [beall@billbeall.com](mailto:beall@billbeall.com)